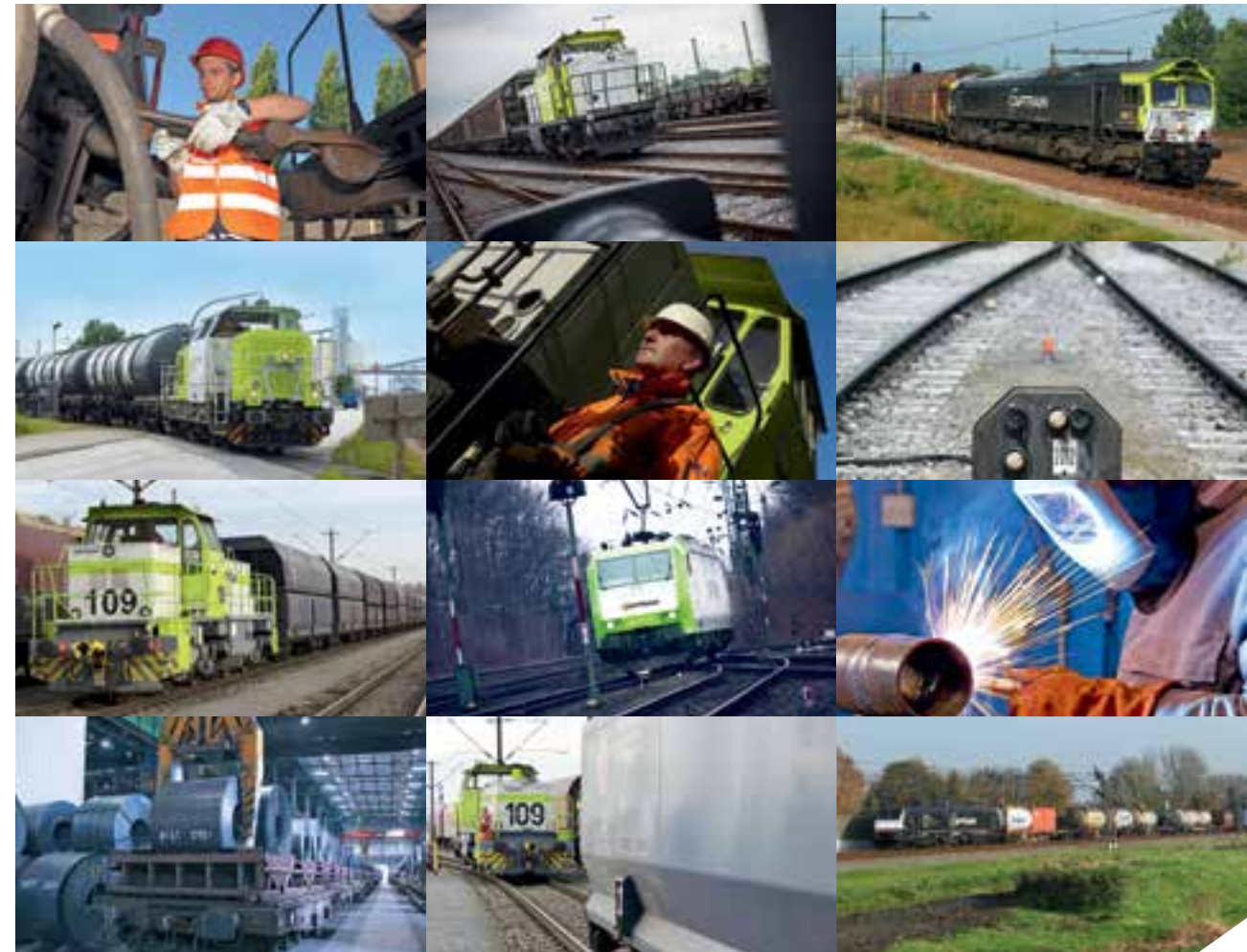




# FULL SERVICE ON THE RAILS

INNOVATIVE. COMPREHENSIVE. BOUNDLESS.



<b>FIRST CLASS FOR YOUR GOODS</b>	<b>04</b>
<b>LOCAL, YET WITHOUT BOUNDARIES</b>	<b>06</b>
<b>GOOD FOR YOUR GOODS: OUR SERVICES</b>	<b>08</b>
<b>FIGURES THAT SPEAK FOR THEMSELVES</b>	<b>12</b>
<b>RESERVED FOR YOUR SUCCESS: OUR RESOURCES</b>	<b>14</b>
<b>MOVING SOMETHING: A STRONG GROUP</b>	<b>16</b>

# FIRST CLASS FOR YOUR GOODS



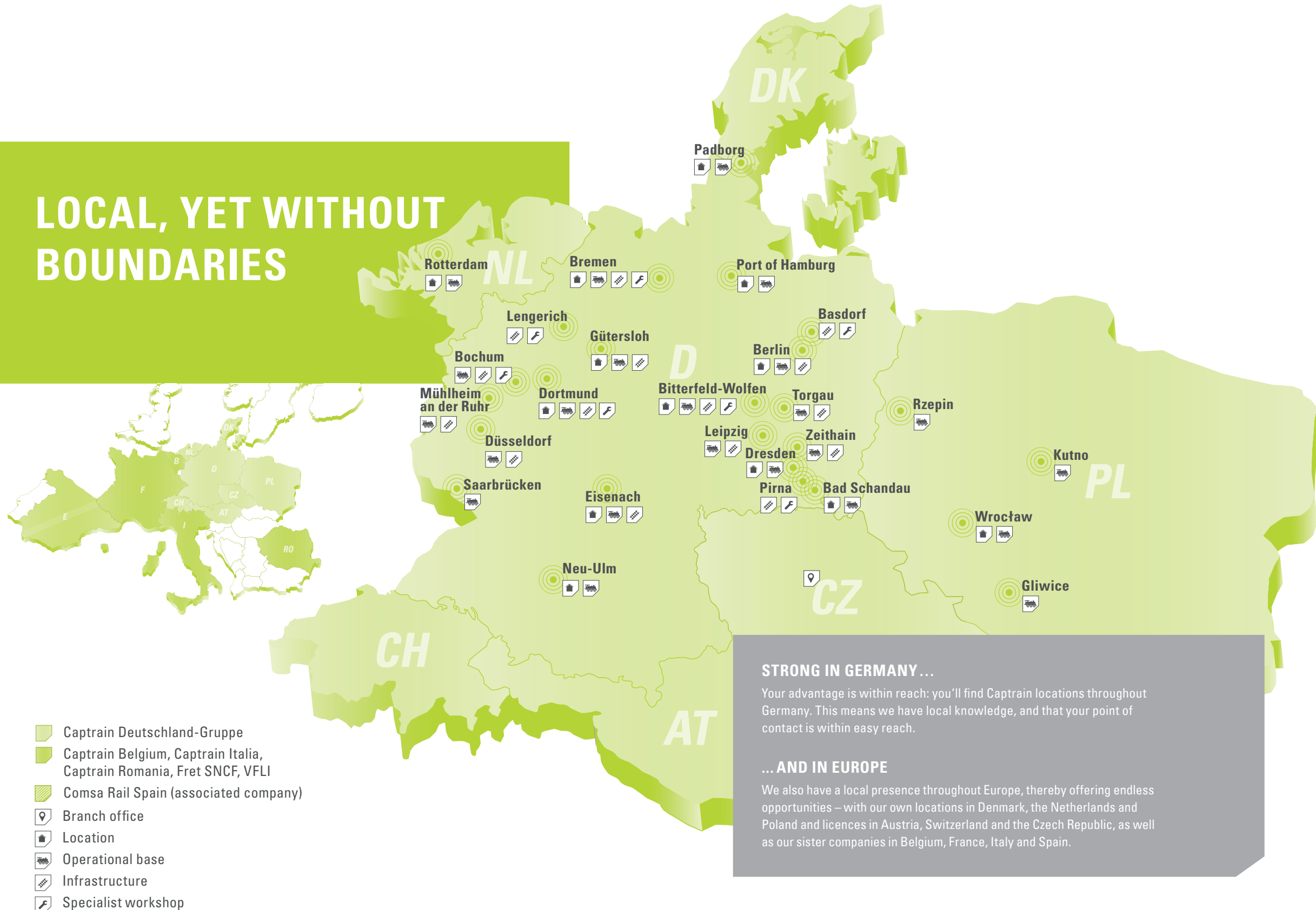
**Your partner for rail transport solutions:**  
**Captrain Deutschland gets your goods to**  
**their destination safely, reliably and on time.**  
**Locally, regionally, or across Europe.**

Welcome to Captrain Deutschland— a logistics company specialised in rail freight! We're your partner whenever you need innovative, quality transport solutions. We put our extensive know-how and advanced equipment to work, to develop future-oriented rail transport concepts.

We do what we do best: moving goods. But we do more than simply deliver: we work with you to integrate our services into your production processes. Our mission: to offer custom solutions with enthusiasm and commitment.



# LOCAL, YET WITHOUT BOUNDARIES



# GOOD FOR YOUR GOODS: OUR SERVICES

Whether it's international traction services, industrial railway operations or integrated logistics solutions, Captrain Deutschland can rise to any rail freight transport challenges. Whatever the specific needs or requirements – loading time frames, transport times,

quantities, or any other freight specifics – we offer custom solutions. We work closely with our customers, from planning operating procedures to coordinating the concepts. That's how we create transparency and keep improving the services we provide you.

## Transport capacity

provision of wagons, loading advice, optimisation

## Train services

performance of trains, operational monitoring, incident management

## Infrastructure

planning, operation, maintenance

## Individual customer service

operating concepts, personal, holistic, continuous

## Shunting services

site deliveries, industrial shunting service, train composition

## Value-added logistics services

pre and onward truck carriage, loading and unloading, warehouse logistics



# INDUSTRIAL RAILWAY OPERATIONS

Planning, operating and maintaining infrastructure, providing and maintaining vehicles, operating the railway and handling, not to mention all our additional services— Captrain Deutschland is your specialist for operating industrial railways. We offer a complete service for rail production logistics at your industrial premises.

**Industrial railway operation for ArcelorMittal Bremen GmbH:**  
Together with ArcelorMittal Bremen, Captrain Deutschland established Hansebahn Bremen in 2010. Since then, Hansebahn has organised and implemented rail transport for the steel-works in Bremen, and maintained the existing infrastructure and vehicles. This allows Captrain Deutschland to continually improve the railway tracks and vehicle resources while minimising maintenance costs as part of a long-term cooperation. A work-based billing system forms the basis for ongoing operational improvements. The legal form of the company – a joint enterprise – gives ArcelorMittal maximum transparency for its important railway operations, with regard to its security of supply.

# TRACTION SERVICES

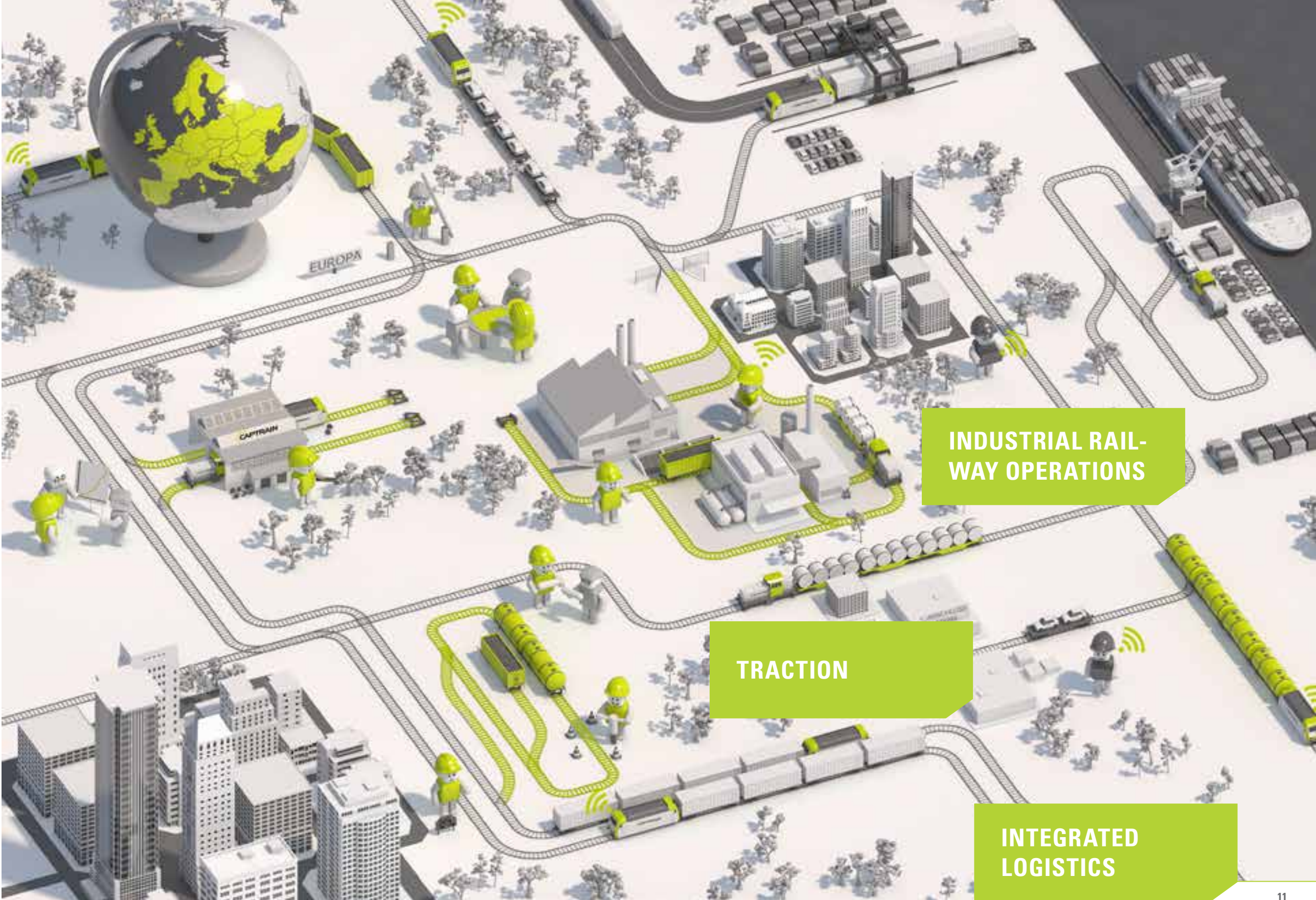
Locally or across borders, our traction services bring your goods from one loading station to another. Reliability, safety and quality are our operating principles. Complete information and delivery services or management of damaged wagons complete our offer. This means you enjoy the best use of our resources while keeping costs down.

**Traction services for Hupac AG:**  
Captrain Deutschland has been providing demanding traction services for Hupac between Rotterdam and Ludwigshafen since 2003. Modern interoperable locomotives and multilingual drivers ensure seamless transport across the national borders. Our services include delivery in and collection from terminals, as well as professional management of damaged wagons. Maximum reliability and quality at fair market conditions, and close exchange of personal and automated information and data form the basis for this long-term cooperation with one of Europe’s most important inter-modal operators.

# INTEGRATED LOGISTICS

Local infrastructure management, wagon supply, shunting operations, train and support services: as a full-service provider, Captrain Deutschland develops logistics solutions tailored to your individual needs from a single source. Thus we bring together industrial logistics with regional and long-distance freight services, to create cross-border transport systems— locally, regionally, or across Europe.

**Integrated logistics for Salzgitter Mannesmann Precision GmbH:**  
Captrain Deutschland has a long-standing customer relationship with Salzgitter Mannesmann Precision. Since 2004, we have been transporting round billets and, since 2010, hollows for the company. In 2014, Captrain Deutschland transported 220,000 tonnes of round billets between Duisburg and Zeithain, and 150,000 tonnes of hollows from Zeithain and Muelheim an der Ruhr to Riesa, Brackwede, Holzhausen and Vitry le François (France). Captrain Deutschland has also been operating the industrial railway in Zeithain since 2005. Important building blocks for customer satisfaction include a tailor-made wagon solution and an operating concept that combines high reliability with maximum flexibility. Optimising capacity utilisation means we can guarantee safe supply of – and offtake from – each location.



INDUSTRIAL RAIL-  
WAY OPERATIONS

TRACTION

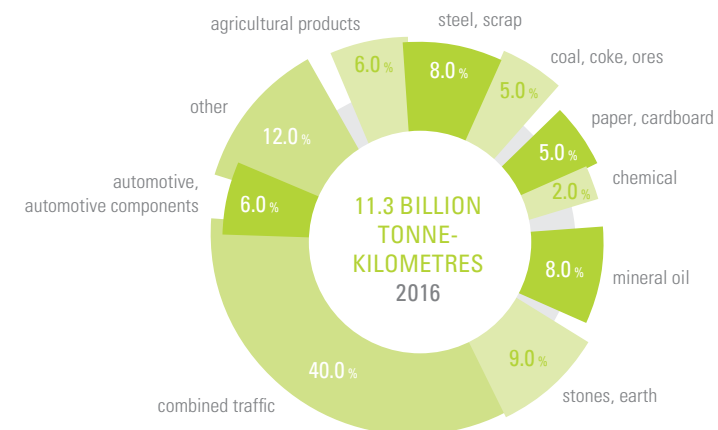
INTEGRATED  
LOGISTICS



# FIGURES THAT SPEAK FOR THEMSELVES

## AT HOME IN ALL INDUSTRIES

Transporting raw materials and products for the steel, chemical, building materials, agricultural, energy, automotive and oil industries– Captrain Deutschland offers individual solutions for all industries.



## TRANSPORT PERFORMANCE 2016

In 2016, Captrain Deutschland transported more than 54,7 million tonnes of goods.



## KEY FIGURES 2016

# RESERVED FOR YOUR SUCCESS: OUR RESOURCES

Rolling stock and rail infrastructure have a major impact on the quality and cost of railway transport. As an efficient rail logistics expert and part of a group active across Europe, Captrain Deutschland provides the right resources, whatever the scale of the project. Whether it's radio-controlled shunting engines

or versatile multi-system electric locomotives, we deliver the right traction. Our fleet includes more than 175 locomotives and 2,500 wagons. Our freight wagons can be optimally adapted to meet your needs. This assures high capacity utilisation, short loading times, and safe, reliable transport.

## WELL MAINTAINED AND SAFE EN ROUTE

Only perfectly maintained rolling stock can guarantee maximum safety and uninterrupted use. That's why we run seven specialist workshops for inspections or repairs. This means we can keep costs down and ensure high availability.

## RIGHT ON OUR TRACK

Our competence in railway infrastructure makes us the right partner for industrial customers. We plan efficient shunting for smooth operations. In addition to engineering and construction, we also offer maintenance, repair and all related services, from switch tower operation, to emergency management, to legal matters.



## CERTIFIED: QUALITY AND SAFETY

Always good, always safe: our logistics services are completely reliable and of the utmost quality. To ensure this, we observe the international quality management standard ISO 9001:2015. From chemicals to mineral oil products, from residues that require supervision to other highly sensitive

goods– Captrain Deutschland is well-versed and experienced. This is also evidenced by the Safety and Quality Assessment System (SQAS) – recognised throughout Europe – which means we satisfy the requirements for transporting hazardous goods.





# MOVING SOMETHING: A STRONG GROUP

Captrain Deutschland GmbH is a subsidiary of the SNCF Logistics Group, the transport and logistics division of the French Société Nationale des Chemins de fer Français (SNCF). SNCF Logistics offers intermodal transport solutions throughout Europe and the world, with a network that extends across more than 120 countries. In 2016, the Group generated a turnover of 10.04 billion euros, making it one of the largest transport and logistics operators in the world.



**Published by:** Captrain Deutschland GmbH, Georgenstraße 22, 10117 Berlin  
**Design:** vanilla-kommunikation.de (Leipzig/Berlin)  
**Print:** Mediengruppe Thiel, Graf-von-Zeppelin-Str. 10a, 14974 Ludwigsfelde  
**Photos/Copyright:** Jens Frommann, Christian Bedeschinski, Heiko König, Marcel van Eupen, Sébastien Godefroy, Frank Tichelkamp, Gotthart A. Eichhorn

**WE WILL ALSO FIND THE OPTIMAL SOLUTION  
FOR YOUR COMPANY – JUST CONTACT US!**

Captrain Deutschland GmbH  
Georgenstraße 22 · 10117 Berlin  
phone +49 (0)30 / 39 60 11 0 · fax +49 (0)30 / 39 60 11 70  
info@captrain.de · www.captain.de